



**H**OMELESS &  
**H**OUSING  
**R**ESOURCE  
**C**ENTER

# SNOFO Learning Community

---

Serving people who use drugs and those with co-occurring mental health needs

March, 2024

# Disclaimer


---

The **Homeless and Housing Resource Center** is a program operated by Policy Research, Inc. and developed under grant 1H79SM083003-01 from the Substance Abuse and Mental Health Services Administration (SAMHSA), U.S. Department of Health and Human Services (HHS). Interviews, policies, and opinions expressed are those of the authors and do not necessarily reflect those of SAMHSA or HHS.



# ASL Interpretation and Transcription

---

- We have arranged for ASL interpretation services during this meeting. The ASL interpreters are:
  - Pamela Mitchell
  - Dave Gratzer
- Live transcription is available
  - Click Live Transcript  and then select Show Subtitle
  - Subtitles can be moved within the window and re-sized
- If you are experiencing technical difficulties, please contact [info@hhrctraining.org](mailto:info@hhrctraining.org)





# Welcome to Session 3

## Innovative Practices and Partnerships



# Agenda

- Recap of Session 2
- Presentations on Innovative Practices and Partnerships
  - RecoveryWorks, CO
  - Aspire, IN
- Panel Discussion and Questions



# RecoveryWorks, Colorado

James Ginsburg,  
Executive Director



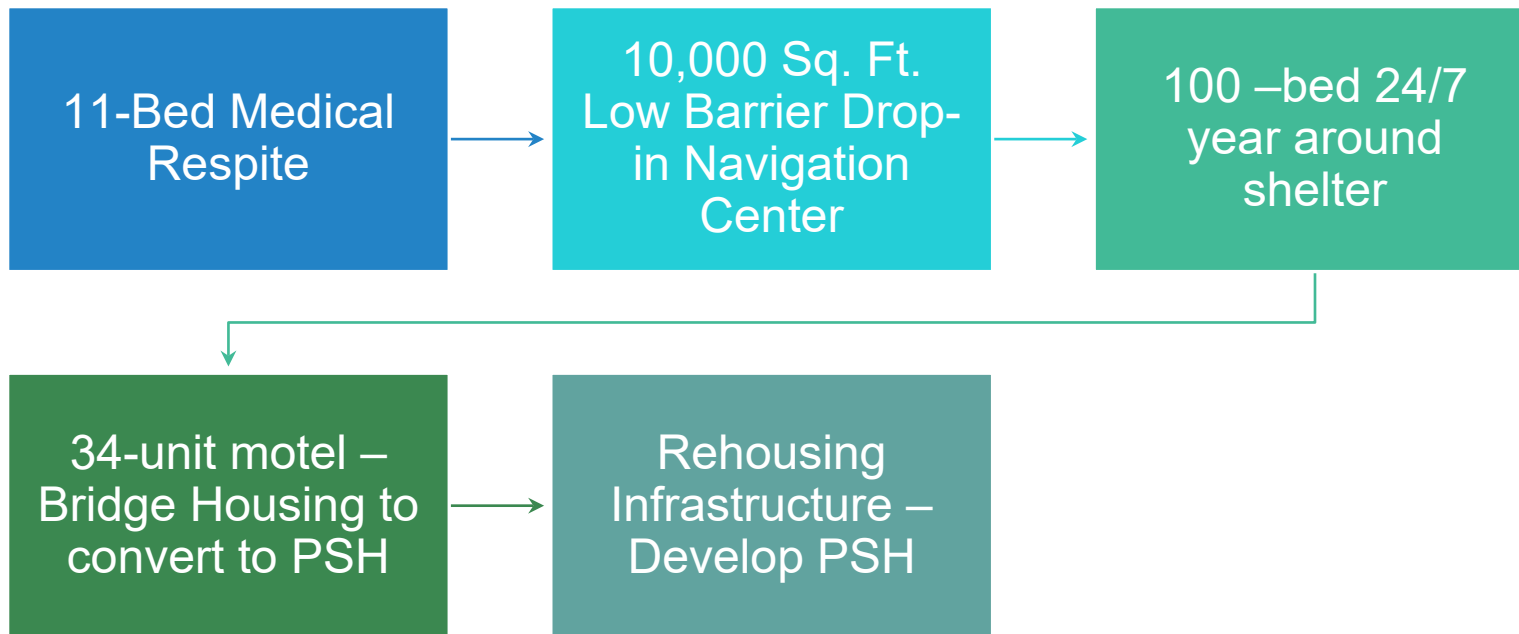


# The Power of Partnership

James Ginsburg, MNM, CAC III  
Executive Director, Recoveryworks

# RECOVERYWORKS

COLORADO NPO  
OPENED IN JULY 2021







# RELATIONSHIPS

---

We are collaborating with  
people vs. organizations

---

Why do we exist in the  
community?

---

How can we be of service?

# BEING OF SERVICE



WE'RE NOT HERE TO  
BUILD OUR KINGDOM



HOLDING AN ATTITUDE  
OF BRINGING SERVANT  
LEADERSHIP



LET'S BE ABOUT  
SOMETHING GREATER  
THAN OURSELVES  
TOGETHER

# MISSION AND VISION

PEOPLE AND ORGANIZATIONS – NPO,  
PUBLIC AND PRIVATE – WANT TO  
PARTICIPATE IN SOMETHING IMPACTFUL



A CLEAR VISION IS INSPIRING



WE WANT – AND NEED - TO CARRY OUT  
“OUR” MISSION WITH YOU

# FORT LYON

- Rural Colorado
- Population: 2700 – Bent County – 5650
- Bill Long – County Commissioner
- Partnerships
  - o Local Community Colleges
  - o Businesses for employment
  - o DHS
  - o Housing Authority
- Challenges





RECOVERYWORKS

Lakewood, CO Suburb of  
Denver – Pop. 158,000

Obvious Leadership and  
Services Gap in the  
Community

Make hay while the sun  
shines – ARPA funds

Partnerships

Politics

Which way is the wind blowing?  
Veterans and Elderly or SUD?



# PARTNERSHIPS

---

Action Center

---

City CDBG

---

County CDBG

---

State ESG, ARPA

---

Public Health

---

FQHC/Community Health

---

Community Mental Health

---

Criminal Justice – Police, probation

---

Faith Based

---

12-step Community

---

Non-profit service providers

# Progress House & Aspire Indiana



**Darrell Mitchell, MBA**  
**Vice President, Recovery**  
**Communities, Aspire**  
**Indiana**



**Mike Keevin**  
**VP Social Drivers of**  
**Health, Aspire Indiana**

# Progress House & Aspire's Whole Health Recovery Continuum

[www.AspireIndiana.org](http://www.AspireIndiana.org)

[www.ProgressHouse.org](http://www.ProgressHouse.org)



# Progress House

- Founded in December of 1961
- Considered Indiana's premier Recovery House for decades
- Opioid Epidemic shifted the average resident profile
- We needed to reimagine how treatment, recovery housing, and recovery supports were designed and delivered.
- In November 2019 Progress House became a wholly governed subsidiary of Aspire Indiana.

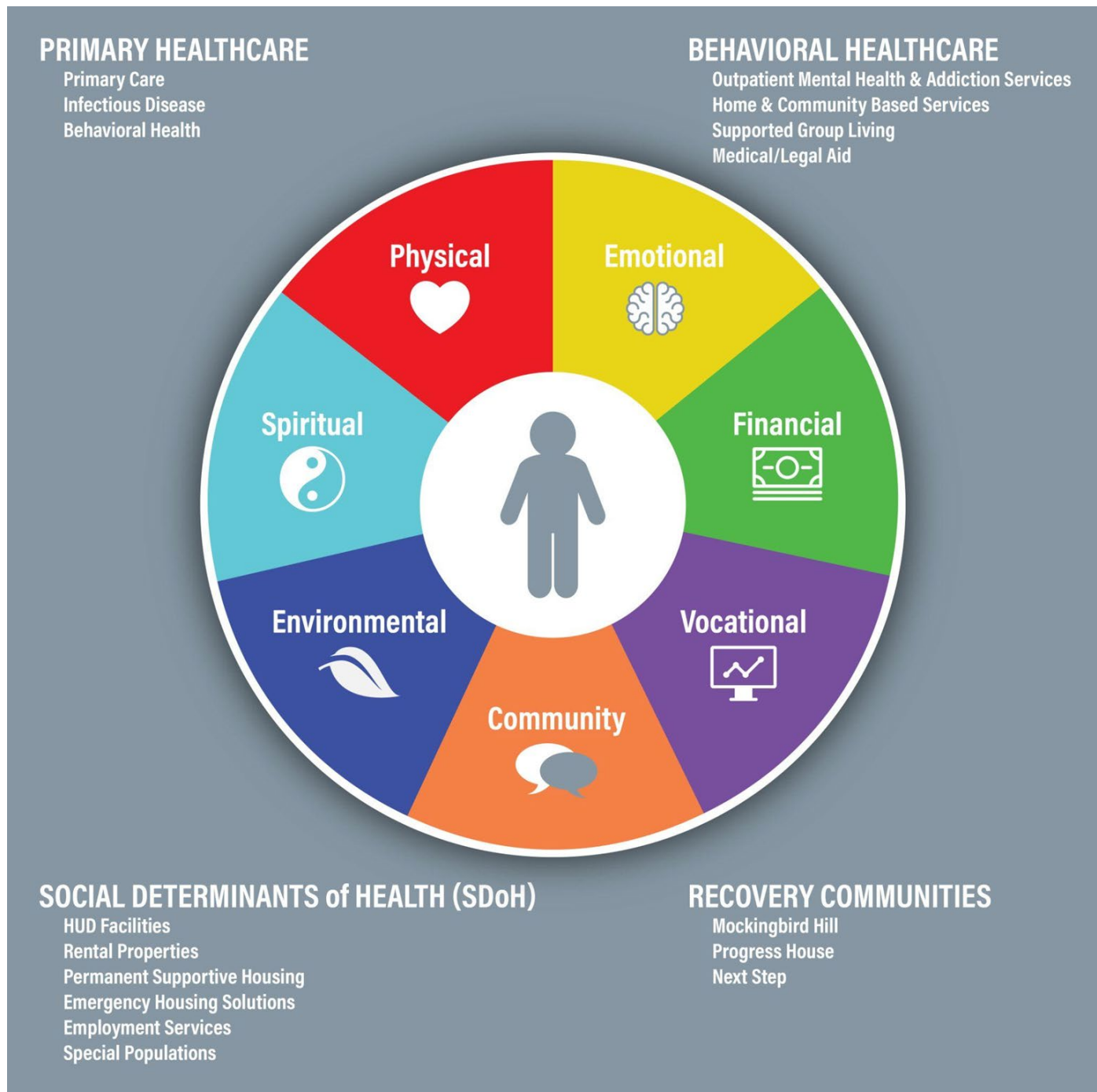


# Who We Are

- Fully integrated health care provider:
  - Physical
  - Behavioral
  - Social Services
  - Substance Use Disorder
- Aspire & Progress House collectively have over 115 years of experience serving those with substance use and/or mental health disorders
- Nonprofit and independent



# Whole Health for the Whole Person



# Whole Health Recovery Continuum

## Whole Health Recovery Continuum

- Mockingbird Hill Recovery Center (opens March 2021) (88 Beds)
- Progress House (96 Beds)
- Next Step Transitional Level II Housing (62 Beds)

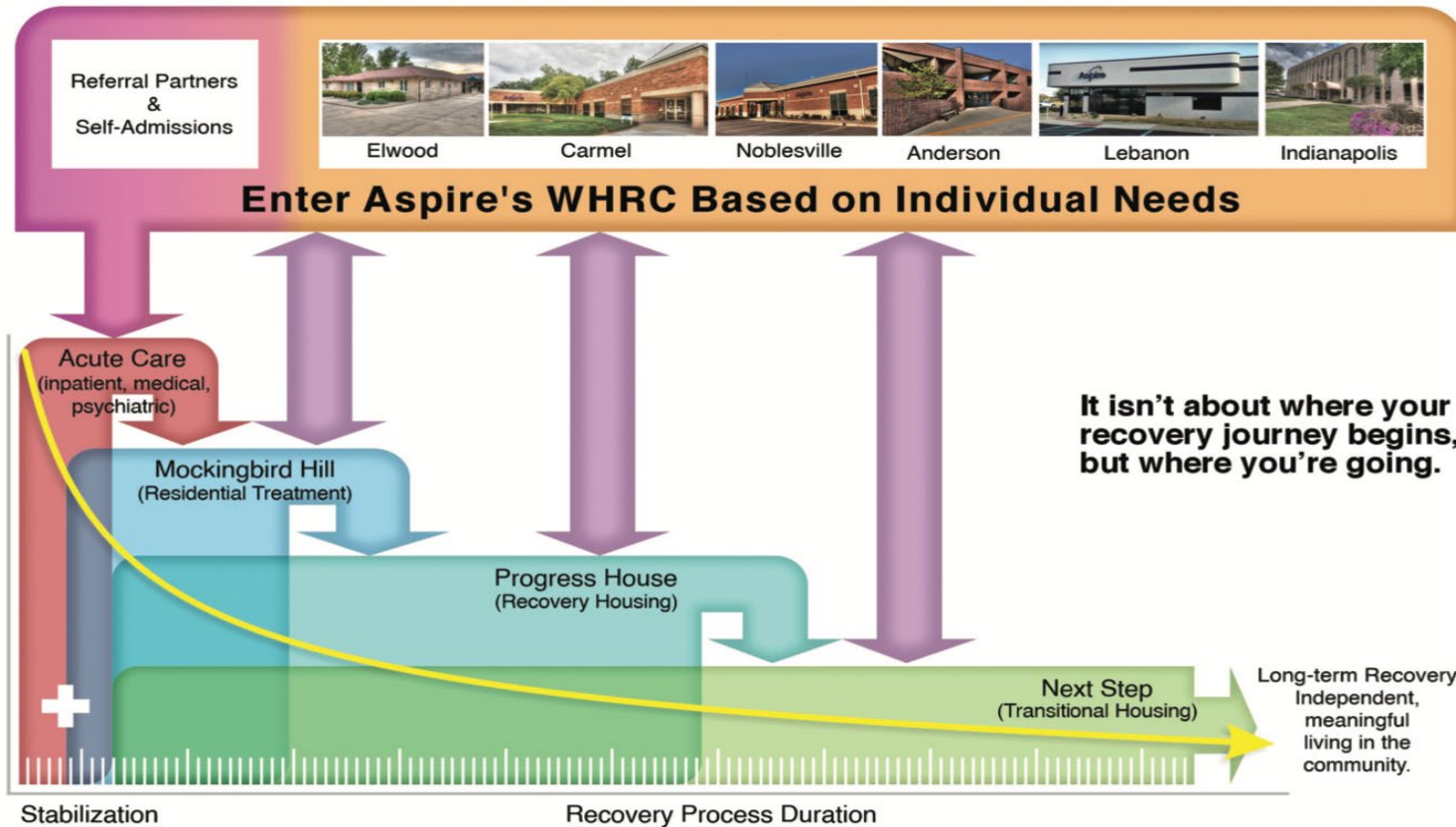
**Total # of Beds = 246**



# Whole Health Recovery Continuum: No Wrong Door

## There is no wrong door

No matter where you are in your recovery journey — from withdrawal to community reintegration — you can enter Aspire’s Whole Health Recovery Continuum at any point.



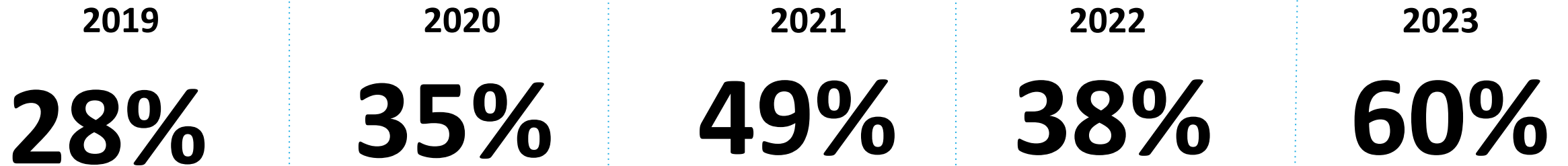
**It isn't about where your recovery journey begins, but where you're going.**





## Progress House Success Rates

Success is defined by residents completing all of our programming requirements. In addition success is marked by changed behaviors, mannerisms, and language; spiritual and community connection, giving back; mentoring and role modeling recovery principles to others, and a renewed sense of self worth. Total men served over the below time period is 1,238.



- Employment
- Housing
- Legal
- Education/Certification
- Benefits Counseling
- Access to Resources
  - Food
  - Clothing



**SDoH Services  
Provided**

# Breaking Down the Silos



We needed the departments to talk and interact with each other



# The Response from SDoH



- Created a process to refer directly through the EHR
- Acknowledgment of the referral through the EHR
- The SDoH team is now entering notes in the EHR
- Continue to move past Integration to Unified

# Panel Questions

- James, how would you advise a smaller rural CoC grantee to begin developing partnerships that would offer Whole Person Care?
- Darrell, can you share more about the timeline for transitioning from a Recovery Housing operator to becoming fully integrated into Aspire?
- Your programs offer a continuum of low-barrier Housing First and Recovery Housing options. How do you operationalize supporting program participants in self-determination and selection of the housing that best meets their needs?
- How do you incorporate culturally responsive practices throughout your programming?
- What sources of funding are you using to cover the cost of supportive services?
- Can you describe your program's processes for coordinating care across other systems (i.e. health, mental health, SUD, employment services, benefits acquisition)?
- Can you share more about the role of people with lived expertise in your service delivery models? Is there anything you would want to emphasize about supporting these staff?



# Questions and Answers

## Additional Technical Assistance

Do you have a question about this Learning Community or SAMHSA technical assistance for your community? Reach out to your HUD TA coach or [submit a question to HHRC](#). Under the “**Subject**” section of the Contact Us form, **please select “HUD SNOFO Grantee TA Question.”**



# Evaluation and Certificate of Participation

<https://lanitek.com/P?s=559717>

*(If you receive an error message, try again in a few minutes)*



# Thank You!

*SAMHSA's Homeless and Housing Resource Center provides high-quality, no-cost training for health and housing professionals in evidence-based practices that contributes to housing stability, recovery, and an end to homelessness.*

## Contact Us:

<http://hhrctraining.org/>

[info@hhrctraining.org](mailto:info@hhrctraining.org)

518-439-7415x4

