


HOMELESS & HOUSING RESOURCE CENTER

Expanding Harm Reduction through Increased Syringe Access

February 28, 2024





February 28, 2024

1


Disclaimer


The **Homeless and Housing Resource Center** is a program operated by Policy Research, Inc. and developed under grant 1H79SM083003-01 from the Substance Abuse and Mental Health Services Administration (SAMHSA), U.S. Department of Health and Human Services (HHS). Interviews, policies, and opinions expressed are those of the authors and do not necessarily reflect those of SAMHSA or HHS.

2

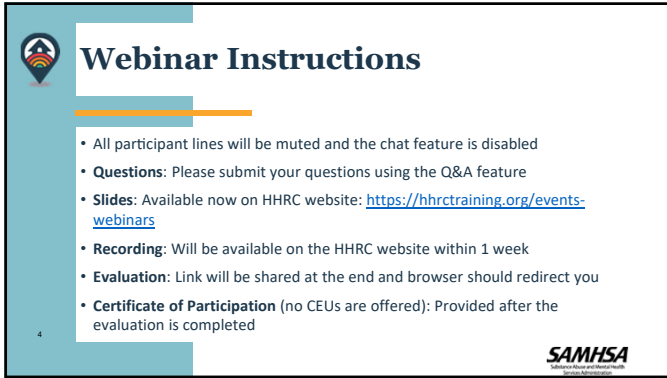
ASL Interpretation and Transcription

- We have arranged for ASL interpretation services during this meeting. The ASL interpreters are:
 - Michele Johnson
 - Linda Egge
- Live transcription is available
 - Click Live Transcript  and then select Show Subtitle
 - Subtitles can be moved within the window and re-sized
- If you are experiencing technical difficulties, please contact info@hhrctraining.org



3


3



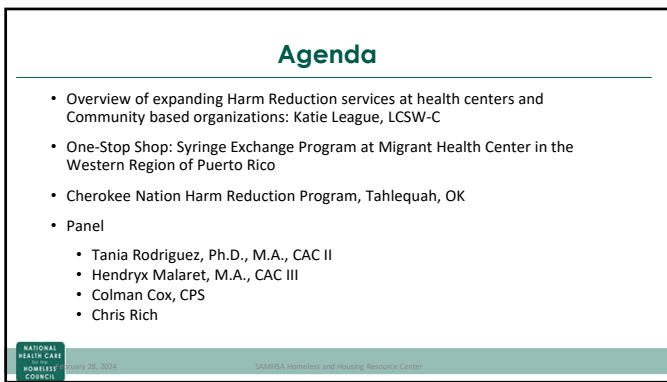
Webinar Instructions

- All participant lines will be muted and the chat feature is disabled
- **Questions:** Please submit your questions using the Q&A feature
- **Slides:** Available now on HHRC website: <https://hhrctraining.org/events-webinars>
- **Recording:** Will be available on the HHRC website within 1 week
- **Evaluation:** Link will be shared at the end and browser should redirect you
- **Certificate of Participation** (no CEUs are offered): Provided after the evaluation is completed

4



4

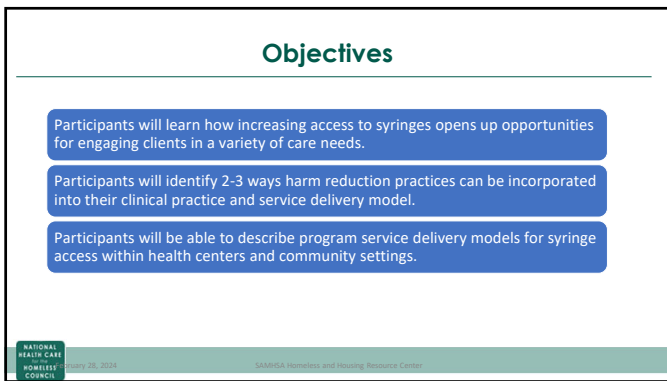


Agenda

- Overview of expanding Harm Reduction services at health centers and Community based organizations: Katie League, LCSW-C
- One-Stop Shop: Syringe Exchange Program at Migrant Health Center in the Western Region of Puerto Rico
- Cherokee Nation Harm Reduction Program, Tahlequah, OK
- Panel
 - Tania Rodriguez, Ph.D., M.A., CAC II
 - Hendryx Malaret, M.A., CAC III
 - Colman Cox, CPS
 - Chris Rich

NATIONAL HEALTH CARE HOMELESS COUNCIL February 28, 2024 SAMHSA Homeless and Housing Resource Center

5



Objectives

- Participants will learn how increasing access to syringes opens up opportunities for engaging clients in a variety of care needs.
- Participants will identify 2-3 ways harm reduction practices can be incorporated into their clinical practice and service delivery model.
- Participants will be able to describe program service delivery models for syringe access within health centers and community settings.

NATIONAL HEALTH CARE HOMELESS COUNCIL February 28, 2024 SAMHSA Homeless and Housing Resource Center

6

Background: Health Care for the Homeless Health Centers

- HCH is a HRSA designation (funding) to provide health care to people experiencing homelessness – many are FQHCs
- Core principles of providing care to people experiencing homelessness are rooted in harm reduction

Trauma-reducing

Client-centered

Focus on Outreach

Center lived experience

Housing = health care

NATIONAL HEALTH CARE HOMELESS COUNCIL February 28, 2024 SAMHSA Homeless and Housing Resource Center

7

Components of Harm Reduction

NATIONAL HEALTH CARE HOMELESS COUNCIL February 28, 2024 SAMHSA Homeless and Housing Resource Center

8

Key Facts about Syringe Access

NATIONAL HEALTH CARE HOMELESS COUNCIL February 28, 2024 SAMHSA Homeless and Housing Resource Center

9

Core Components	Additional Services
<ul style="list-style-type: none"> • Clean syringes • Safe Use kits • Naloxone • Disposal services • Education • Referrals to treatment 	<ul style="list-style-type: none"> • Testing • Wound care • Medication Assisted Treatment (MAT) • Primary Care • Case Management • Housing services

NATIONAL HEALTH CARE HOMELESS COUNCIL February 28, 2024 SAMHSA Homeless and Housing Resource Center

10

Implementing Harm Reduction within your organization

- Implement education on harm reduction principles across all position within your organization.
- Make Naloxone readily available to staff and clients.
- Build partnership with Harm Reduction programs to demonstrate need.
- Develop and implement an overdose response policy:
 - Within your clinic site(s)
 - When staff are in the community

NATIONAL HEALTH CARE HOMELESS COUNCIL February 28, 2024 SAMHSA Homeless and Housing Resource Center

11

Steps to Integrate Harm Reduction

- Step 1**
 - Prescribe naloxone
 - Offer syringe disposal
 - Direct referrals for MAT providers
- Step 2**
 - Partner with SSP to offer services onsite
 - Distribute naloxone
 - Have some MAT providers on site
- Step 3**
 - Becomes an SSP
 - Offer supervised monitoring (eventually safe consumption)
 - All providers are MAT providers

NATIONAL HEALTH CARE HOMELESS COUNCIL February 28, 2024 SAMHSA Homeless and Housing Resource Center

12

Questions to Consider

- Does your state have a Good Samaritan Law?
- What is the process of becoming a SSP in our state?
- Who in our community already has strong relationships with PWUD?
- How can we lift-up and prioritize the knowledge of people with lived experience?

NATIONAL HEALTH CARE HOMELESS COLLECTIVE

January 26, 2024

SAMHSA Homeless and Housing Resource Center

13

ONE-STOP SHOP SYRINGE EXCHANGE PROGRAM



Tania Rodriguez, Ph.D., M.A., CAC III
Chief Executive Officer



Hendryx Malaret, M.A., CAC III
Programmatic Director



14



14

Migrant Health Center, Western Region Inc.

- Migrant Health Center, Western Region, Inc. (MHC) is a Community Based, 330 (g) (e) (h), non-profit, 501(c) 3, Federally Qualified Health Center, that provides care in the western, southwestern and northwestern region of Puerto Rico (PR) since 1971.
- MHC provides high-quality, integrated healthcare services through 15 clinical sites and a special projects division.
- Services render include Primary care, internal medicine, pediatrician, OB/Gyn, dental care, optometry, mental health, x rays, pharmacy, laboratory, vaccination, chronic disease management, post COVID care, HIV prevention and treatment services, substance abuse prevention and treatment, among others.



15




15



16

Special Projects Division

- Our Special Projects Division (SPD) provides care following the One Stop Shop Model of Care (for special populations).
- Through internal collaborations our 12 independent projects provide services such as;
 - HIV/AIDS and substance abuse prevention and treatment
 - ✓ Include HIV testing, EBIs and health fairs
 - ✓ SUD counseling and buprenorphine
 - ✓ Trauma Informed Care
 - Syringe exchange, syringe dispensing machines and outreach
 - Hepatitis C testing, condom distribution, transportation and vaccination
 - PrEP, hormonal therapy and free primary and dental care for the homeless
 - Bathroom and laundry area, clothes distribution, hygiene kits



HHRC SAMHSA

17

How did the Special Projects Division Begin

- Identifying specific need of each population
- The Social Determinants of Health
- The lack of services observed by MHC
- Fragmentation within the health care services

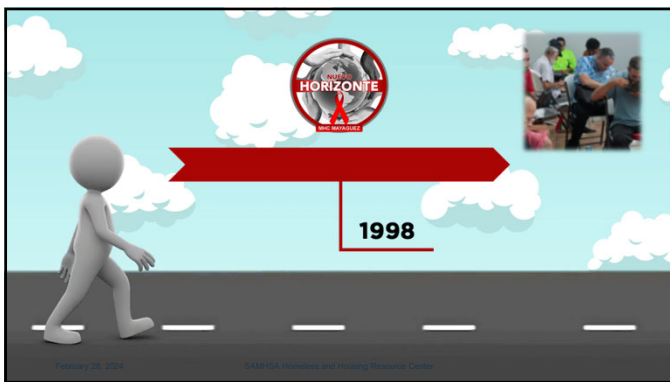


HHRC SAMHSA

18



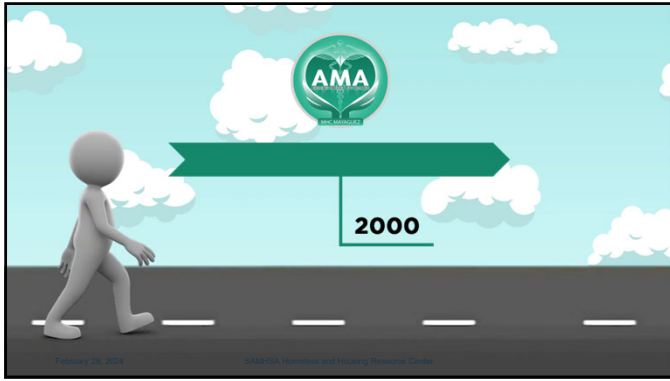
19



20



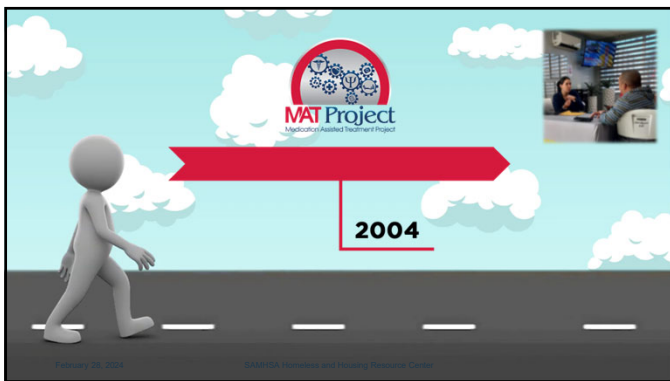
21



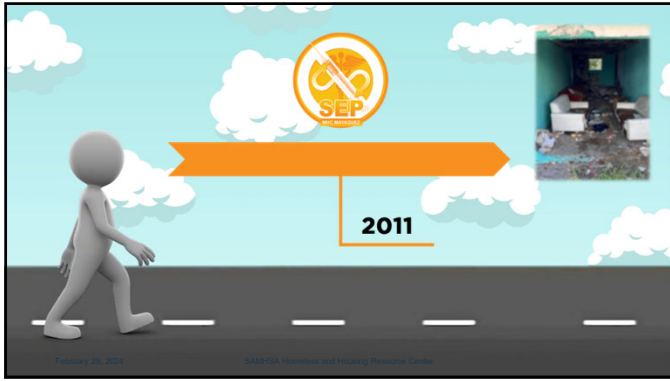
22



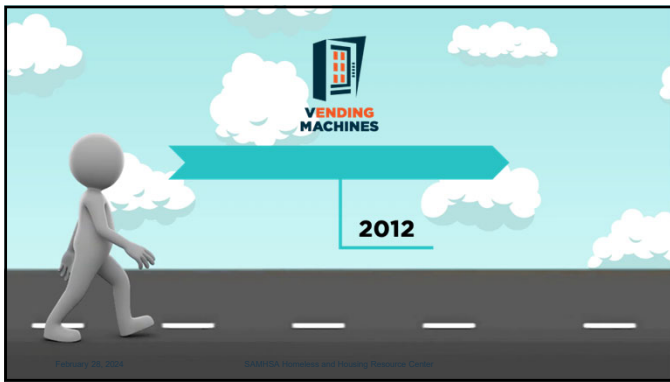
23



24



25



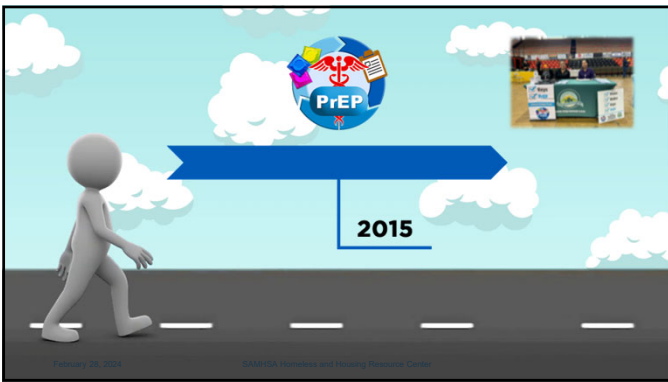
26



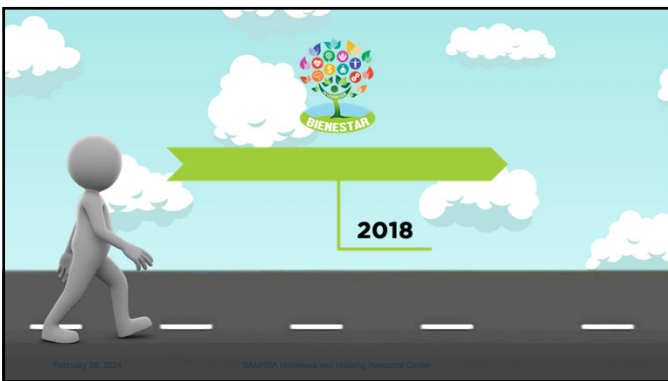
27



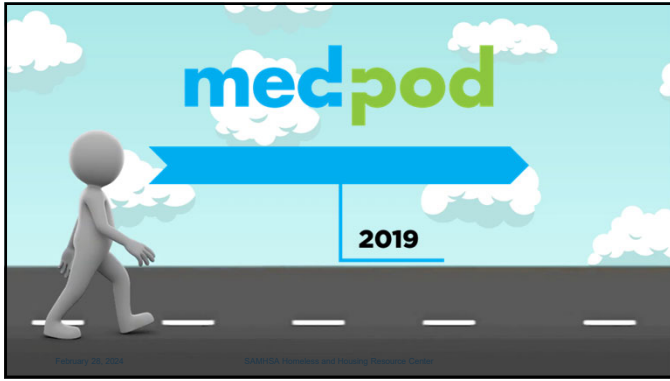
28



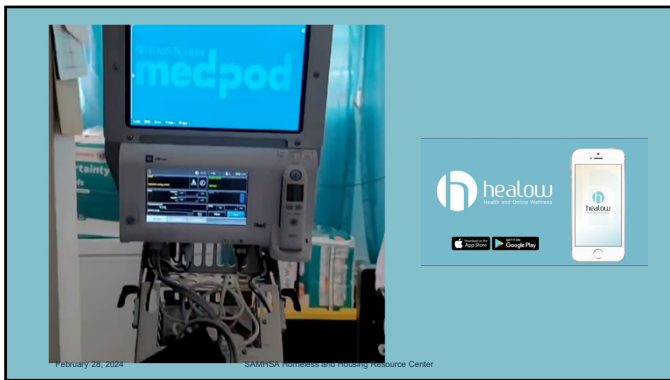
29



30



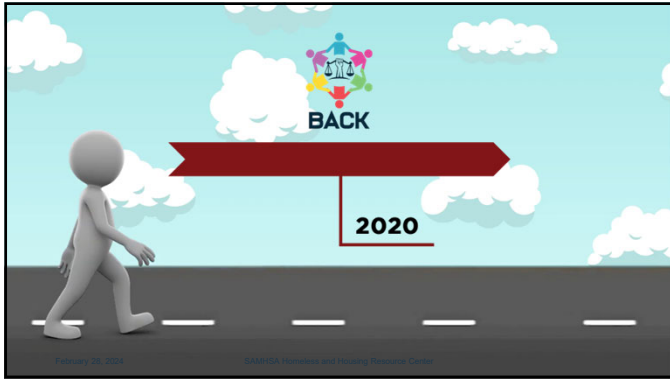
31



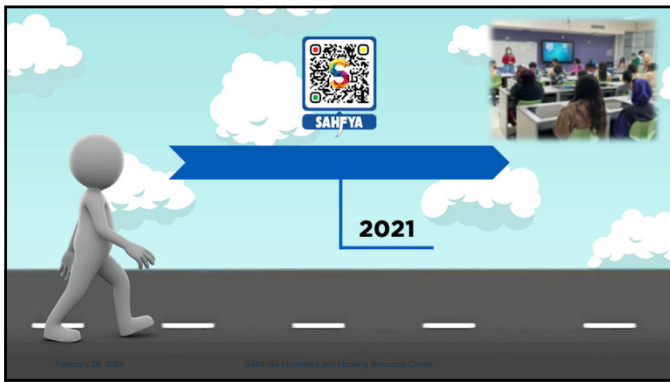
32



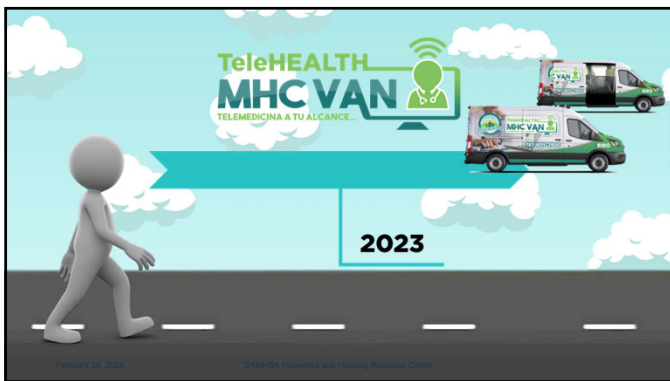
33



34



35



36



37



38




List of Services Provided

- HIV and Hepatitis C Testing
- Linkage and Treatment for PLWHA
- PrEP
- Condom Distribution
- Harm Reduction Interventions
- Navigation Services
- Outreach
- Transportation
- Vaccination
- Support Groups
- Gender-Affirming Hormone Therapy
- Primary Health Services
- Case Management
- Mental Health Services
- Dental and Gynecology Services
- Substance Abuse Counselor
- Medication-Assisted Treatment (Buprenorphine)
- Syringe Exchange and Nalaxone Distribution
- Syringe Dispensing Machines (Vending Machines)
- Syringe Disinfection Kits
- Snacks, Showers, Bathroom Facilities, and Laundry
- Nutritionist Services
- Health Education
- Telemedicine

39

Strategies that have been effective

- Conducting mapping and outreach activities in strategic locations establishing fixed routes, fixed days.
- Creating strategies that have become best practices, including what we have called AM/PM and the "Ruta del Sabor" (The flavor route).

40

40

More Strategies that have been effective

- Recruiting, engaging, training and working with peers "Social Networking Strategy".
- Incorporate activities such as support groups.
- Training and distribution of Narcan among peers.








41

41

Integration of Programs/Services and Provision of a Holistic Services

- People who test positive for HIV are immediately navigated to the corporation's Ryan White Project through an internal referral.
- People eligible for PrEP are referred and navigated instantly.
- Persons eligible MAT (Buprenorphine) are referred and linked immediately.
- Laboratory and pharmacy services are available at the facilities.
- Navigation and transportation services are provided to the different Projects, external agencies or any of MHC facilities.

42

42

Services for people with SUD and/or PWID



- Community outreach activities are carried out by establishing weekly fixed routes. Being consistent over the years has been key factor.
- Services are available daily, both at the facilities and within the communities. MHC constantly work with the collaboration of peers.
- Projects of the SPD coordinate activities amongst each other where services such as HIV and Hepatitis C tests are performed, syringe exchanges are carried out, vaccines are administered, and medical and ancillary services are provided. In addition, wound care is performed, among other services.



43



43

SPD Annual Achievements



Annual Achievements

Over 1,500 HIV Test	Impact more than 20 Municipalities within the Western Region
Conduct more than 500 Hep C Tests	Approximately 150,000 syringe exchanges
100% of HIV Positive individual out of treatment have been re-linked to treatment (more than 30 persons)	Treatment and Antiretroviral Therapy to over 250 PLWHA
Over 60,000 condoms distributed	Over 1,000 Naloxone Kits Distributed
Approximately 100 individual in MAT (Buprenorphine)	HIV Prevention Services provided to more than 2,500 non-duplicate individuals
Over 200 persons are provided with Substance Abuse Counseling	Harm Reduction Intervention provided to over 1,500 individuals at high risk
Medical Services to 1,200 homeless individuals	More than 100 persons are linked to PrEP
Mental Health Services to 1,700 persons	3,000 syringe kits are disturbed through the Syringe Vending Machines



44



44

Integrated Mental Health Services



Integrated Mental Health Services:

- Integration of mental health staff into team discussions (huddle up) and case discussions.
- Availability for mental health services at all patient appointments.
- Psychological evaluations at least once a year for everyone who receive health services.



45



45

Treatment with Buprenorphine

Treatment with Buprenorphine

- Medical case management identifies patient by screening for substance use with the use of the DAST Tool.
- Patients that reflects any type of risk, will be referred to a Substance Use Counselor.
- Substance Abuse Counselor links participants to buprenorphine treatment.
- Patients who are active in substance use are linked immediately to Buprenorphine treatment.



46



46

Home Delivery of Medications



47



47

Home Laboratory Samples Collection



48



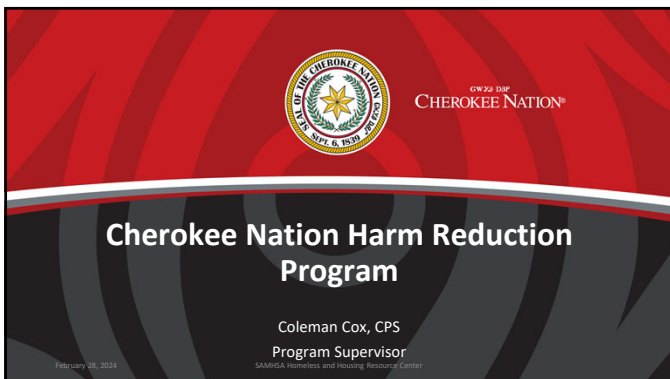
48



49



50



51

Discussion Goals

Participants will come away understanding...

- Important wisdom and lessons on our Journey to build a HR Program
- How and where we deliver our services.
- Our programmatic Barriers and some of our Breakthroughs to date.

February 28, 2024 SAMHSA Homeless and Housing Resource Center

52

What is Harm Reduction?

- Movement to support the rights of all peoples to receive equitable healthcare.
- Wellbeing over abstinence
- Tools to reduce risk of harm to self and others.

We All engage in behaviors now that began with Harm Reduction advocacy. Most began with Stigma and lack of societal acceptance.

We Can ALL practice Harm Reduction

HR Social Endorsement Spectrum


Overdose Prevention Centers
Syringe Service Programs
Naloxone & Fentanyl Strips
M.A.T. Clinics
HIV and HCV Screening
Sexual Health Resources
Nicotine Replacement
Face Masks and Vaccines
Epi-pens and Inhalers
Car Seats & Seat Belts
Diet, Exercise & Sunscreen

February 28, 2024 SAMHSA Homeless and Housing Resource Center


53

Weighing the Costs

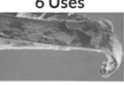
New Syringe



After 1 Use



6 Uses



5 = Average Uses Reported Per Syringe⁴

1 Endocarditis

~\$50,000 per episode⁶

1 HIV+

\$384,000 over a lifetime⁵

OR

1 New

~\$0.17 per syringe⁷

February 28, 2024 SAMHSA Homeless and Housing Resource Center

54

Learning from our Elders
 On our Journey to build our HR Program.

Site Visits to learn from tribal HR Elders
 2019 and 2021: Qualla Boundary, Cherokee, NC.
 2022: Swinomish Reservation and East Van. B.C.
 2022: Tribal Health Connections- Lummi Nation, Washington

Sought Wisdom of Non-Tribal HR Elders
 2022 – Present Day: TTA from Heather Edney, co-founder of BVLP, NHRC, NASEN and more.
 TTA from Mark Jenkins, Streetologist, founder of CHRA

Attended Conferences and Workshops
 NASTAD- Louisville KY, NHRC- Puerto Rico, Rx Drug Summit-ATL GA




February 28, 2024 SAMHSA Homeless and Housing Resource Center

55

“Fast Lane” Wisdom for Harm Reduction

- **Connect to other service lines:**
MAT Clinics and Urgent Care/ER HR Kits and referrals.
- **Get the right naloxone for the Situation.** IM naloxone for PWID vs. nasal for Responders.
- **Explore innovative interventions:** Pulse oximeters and O2 tanks for HR outreach.
- **Empower secondary exchangers** to take knowledge and resources to places you can't reach. Pay volunteers and needle brigades more than Pizza!
- **Create an advisory council** of PWUD, secondary exchangers and PRSS's
- **Provide community education:** Proper Test Strip techniques with meth and Xylazine.



February 28, 2024 SAMHSA Homeless and Housing Resource Center

56



Cherokee Nation Harm Reduction Program Details

Open for Business: Sept 20, 2022.
 1st Year Goal: Serve 75 unique people. Serve 500 by 2025
 As of Today: Over 700 members!


Funded by: Public Health and wellness Fund Act of 2021 and SAMHSA's HD22 Harm Reduction Grant

Free for ALL People 18 + who live in the Cherokee Nation 14 County Reservation. Services include:

- Needle Exchange and Disposal
- Wound Care Supplies and Safer Use Education
- Sexual Health Resources and Overdose Prevention Tools
- Male and Female Hygiene Kits,
- Nutritional Items
- HIV, HCV and Syphilis Screening
- Linkages to recovery and treatment services





214 N. Bliss Ave. Tahlequah, OK
 539-234-3785
 Monday-Friday 8am-5pm



February 28, 2024 SAMHSA Homeless and Housing Resource Center

57




Outreach Worker, April, building Hygiene and safe sex kits in our Care Corner.

PRSS, Kevin (right) training on safer injection best practices.

February 28, 2024 SAMHSA Homeless and Housing Resource Center

58



VIRTUAL TOUR

February 28, 2024 SAMHSA Homeless and Housing Resource Center

59

Mobile Outreach Program

Mobile Program Launch: August 31st, International Overdose Awareness Day

Program Goal: Love people. Help meet basic needs. Give people who use drugs overdose and infection prevention tools.



February 28, 2024 SAMHSA Homeless and Housing Resource Center

60

<h3>Programmatic Barriers</h3> <p>External Barriers:</p> <ul style="list-style-type: none"> Community and PWUD Stigma Law Enforcement Encounters Mobile Outreach Locations Paraphernalia laws <p>Internal Barriers:</p> <ul style="list-style-type: none"> Getting Supplies in timely manner Hiring and maintaining Staff Clinical Health System accreditation restrictions Communication outside bankers hours 	<h3>Programmatic Breakthroughs</h3> <p>External Breakthroughs:</p> <ul style="list-style-type: none"> Community meetings 1st Responder Lunch and Learns Developed recommendations for Paraphernalia law amendment. <p>Internal Breakthroughs:</p> <ul style="list-style-type: none"> Community education briefs Vending machine proposal Nutrition Budget approval
---	---

61

Community Education

Inspired by Resources from BVLUP and HR Community Listening Sessions

<h4>HIERARCHY OF RISKS</h4> <p>Follow the Color Zone Diagram to reduce harm associated with injection drug use.</p> <p>Safer</p> <ul style="list-style-type: none"> Inject into the deltoid muscle Use sterile, single-use syringes Use sterile, single-use needles <p>More Risk</p> <ul style="list-style-type: none"> Inject into the arm or hand Use dirty or used syringes/needles Use dirty or used needles <p>Dangerous</p> <ul style="list-style-type: none"> Inject into the neck or chest Use dirty or used syringes/needles Use dirty or used needles 	<h4>INJECTION PRACTICES</h4> <p>BEST</p> <ul style="list-style-type: none"> Use new, sterile, single-use syringes Use new, sterile, single-use needles Use sterile, single-use filters Use sterile, single-use vials Use sterile, single-use ampoules Use sterile, single-use ampoules Use sterile, single-use ampoules <p>OKAY</p> <ul style="list-style-type: none"> Use new, sterile, single-use syringes Use new, sterile, single-use needles Use sterile, single-use filters Use sterile, single-use vials Use sterile, single-use ampoules Use sterile, single-use ampoules Use sterile, single-use ampoules <p>AVOID</p> <ul style="list-style-type: none"> Reusing syringes and needles Reusing filters Reusing vials Reusing ampoules Reusing ampoules Reusing ampoules Reusing ampoules 	<h4>SYRINGE EDUCATION</h4> <p>NEEDLE GAUGE</p> <table border="1"> <tr> <th>Needle Gauge</th> <th>Needle Length</th> <th>Needle Type</th> </tr> <tr> <td>25</td> <td>1.5"</td> <td>Butterfly</td> </tr> <tr> <td>27</td> <td>1.5"</td> <td>Butterfly</td> </tr> <tr> <td>29</td> <td>1.5"</td> <td>Butterfly</td> </tr> <tr> <td>30</td> <td>1.5"</td> <td>Butterfly</td> </tr> <tr> <td>31</td> <td>1.5"</td> <td>Butterfly</td> </tr> <tr> <td>32</td> <td>1.5"</td> <td>Butterfly</td> </tr> <tr> <td>33</td> <td>1.5"</td> <td>Butterfly</td> </tr> <tr> <td>34</td> <td>1.5"</td> <td>Butterfly</td> </tr> <tr> <td>35</td> <td>1.5"</td> <td>Butterfly</td> </tr> <tr> <td>36</td> <td>1.5"</td> <td>Butterfly</td> </tr> <tr> <td>37</td> <td>1.5"</td> <td>Butterfly</td> </tr> <tr> <td>38</td> <td>1.5"</td> <td>Butterfly</td> </tr> <tr> <td>39</td> <td>1.5"</td> <td>Butterfly</td> </tr> <tr> <td>40</td> <td>1.5"</td> <td>Butterfly</td> </tr> </table>	Needle Gauge	Needle Length	Needle Type	25	1.5"	Butterfly	27	1.5"	Butterfly	29	1.5"	Butterfly	30	1.5"	Butterfly	31	1.5"	Butterfly	32	1.5"	Butterfly	33	1.5"	Butterfly	34	1.5"	Butterfly	35	1.5"	Butterfly	36	1.5"	Butterfly	37	1.5"	Butterfly	38	1.5"	Butterfly	39	1.5"	Butterfly	40	1.5"	Butterfly
Needle Gauge	Needle Length	Needle Type																																													
25	1.5"	Butterfly																																													
27	1.5"	Butterfly																																													
29	1.5"	Butterfly																																													
30	1.5"	Butterfly																																													
31	1.5"	Butterfly																																													
32	1.5"	Butterfly																																													
33	1.5"	Butterfly																																													
34	1.5"	Butterfly																																													
35	1.5"	Butterfly																																													
36	1.5"	Butterfly																																													
37	1.5"	Butterfly																																													
38	1.5"	Butterfly																																													
39	1.5"	Butterfly																																													
40	1.5"	Butterfly																																													

62

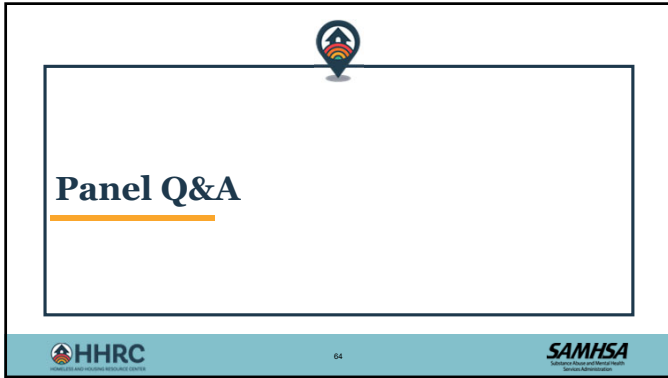
WADO

dodadagohvi

Coleman-cox@cherokee.org
CNHRP 214 Bliss Ave. Tahlequah OK 74464

February 28, 2024 SAMHSA Homeless and Housing Resource Center

63



Panel Q&A

64

HHRC SAMHSA

64



Evaluation and Certificate of Participation

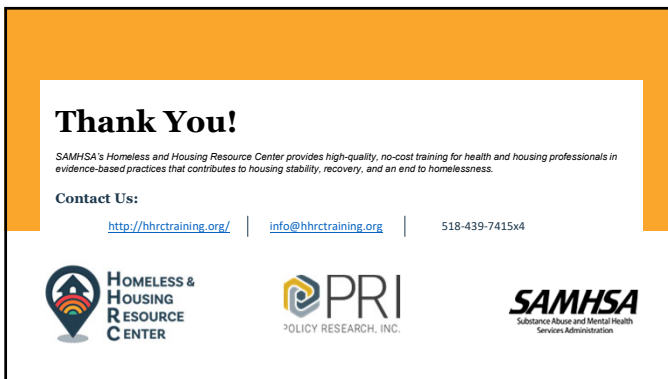
<https://lanitek.com/P?s=530221>

(If you receive an error message, try again in a few minutes)

65

HHRC SAMHSA

65



Thank You!

SAMHSA's Homeless and Housing Resource Center provides high-quality, no-cost training for health and housing professionals in evidence-based practices that contributes to housing stability, recovery, and an end to homelessness.

Contact Us:

<http://hhctraining.org/> | info@hhctraining.org | 518-439-7415x4

HOMELESS & HOUSING RESOURCE CENTER

PRI POLICY RESEARCH, INC.

SAMHSA Substance Abuse and Mental Health Services Administration

66

66