

HOMELESS & HOUSING RESOURCE CENTER

Addressing Overdose Deaths: Combined Interventions

Utilizing culturally responsive and coordinated Harm Reduction, Supportive Housing, Recovery Supports and On-Demand Treatment



SAMHSA
Substance Abuse and Mental Health Services Administration

November, 2022

1


Disclaimer


The **Homeless and Housing Resource Center** is a program operated by Policy Research, Inc. and developed under grant 1H79SM083003-01 from the Substance Abuse and Mental Health Services Administration (SAMHSA), U.S. Department of Health and Human Services (HHS). Interviews, policies, and opinions expressed are those of the authors and do not necessarily reflect those of SAMHSA or HHS.

2


ASL Interpretation and Transcription

- We have arranged for ASL interpretation services during this meeting. The ASL interpreters are:
 - **Andrew Galuskin**
 - **Kip Opperman**
- Live transcription is available
 - Click Live Transcript  and then select Show Subtitle
 - Subtitles can be moved within the window and re-sized
- If you are experiencing technical difficulties, please contact info@hhrctraining.org




3

3




Webinar Instructions

- All participant lines will be muted and the chat feature is disabled
- **Questions:** Please submit your questions using the Q&A feature
- **Slides:** Available now on HHRC website: <https://hhrctraining.org/events-webinars>
- **Recording:** Will be available on the HHRC website in 1 week
- **Evaluation:** Link will be shared at the end and browser should redirect you
- **Certificate of Participation** (no CEUs are offered): Provided after the evaluation is completed




4




Today's Presenters

- Rachel Post, Senior Associate, TAC
- LaMont Green, Director of Diversity, Equity and Inclusion, TAC




5



Agenda


- Welcome and Introductions
- Background
 - Rate of overdose deaths
 - Impact on BIPOC
 - Cultural Responsiveness and Power Analysis
 - Harm Reduction
 - Supportive Housing
 - Recovery Support Services
 - Treatment On-Demand
- Challenges to Alignment of Combined Interventions
- Alignment Opportunities and Recommendations
 - State
 - Local
- Resources
- Poll Questions
- Q&A



6




7



Poll Question

Tell us about yourself. Which of the below best identifies your interest in today's session (check all that apply)


<input type="checkbox"/> Person with lived expertise or in recovery <input type="checkbox"/> Person providing peer recovery supports <input type="checkbox"/> Person employed as a homeless services housing specialist/case manager <input type="checkbox"/> Person employed as a qualified mental health professional	<input type="checkbox"/> Person who is certified or licensed as an addictions counselor <input type="checkbox"/> Program Manager <input type="checkbox"/> Program Director <input type="checkbox"/> Prescriber <input type="checkbox"/> Executive Director <input type="checkbox"/> Other _____
--	--



8

Background

- 108,000 lives lost to overdose deaths in 2021
- The rate of drug overdose deaths among Blacks has quadrupled in the last eight years.
- American Indian or Alaska Native individuals experienced the highest rate of overdose mortality in 2020, which was 30.8% higher than that for White individuals.
- Hispanic or Latina(o)(x) individuals experienced a large percentage increase in drug overdose rates in 2020 (40.1%)
- A growing body of research has documented that substance use is strongly associated with homelessness and that there are disproportionately high numbers of overdose deaths among individuals experiencing homelessness.



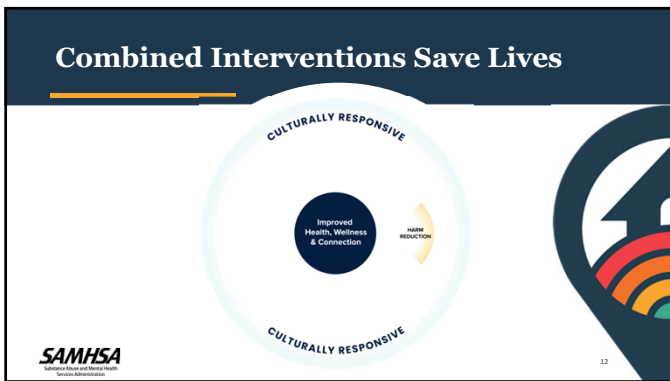
9



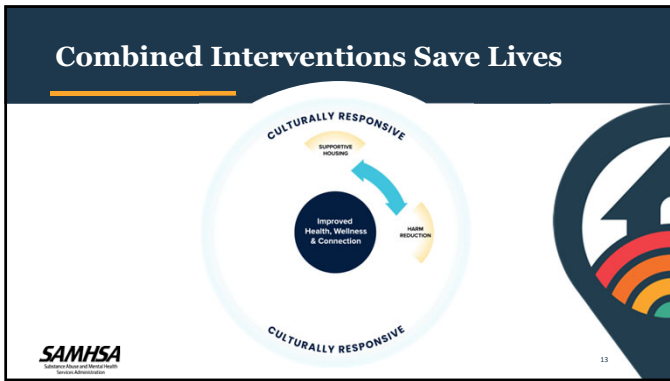
10



11



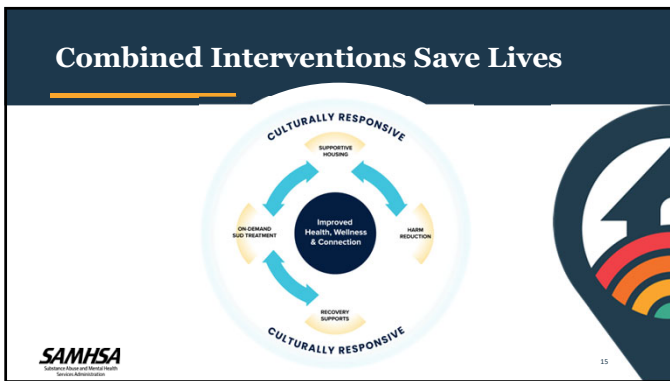
12



13



14



15

Combined Interventions Save Lives

16

16

Challenges to System Alignment

- Funding silos
- Different agencies operate different components
- CoC doesn't typically coordinate with SUD treatment system
- State agencies responsible for organizing and financing SUD treatment may not collaborate with housing system.

17

17

Challenges to System Alignment

- Harm reduction programs financed and operated by grassroots and non-governmental organizations
- Recovery supports are not adequately integrated with rest of system
- Community-based organizations operated by and for BIPOC communities may not have had opportunities to expand their array of services to meet their communities' needs for these interventions.

18

18

System Alignment Opportunities

State Coordination and Alignment Recommendations

- Incorporate People with Lived Expertise (PWLE) into Policy and Funding Decisions (WA State Health Care Authority [Office of Recovery Partnerships](#))
- Advance Culturally Responsive Care within Existing Services (CA [Community Mental Health Equity Project](#))
- Create Funding Opportunities for Nontraditional Partnerships (MN Department of Human Services [Cultural and Ethnic Minority Infrastructure Grant](#) and NY State's [Friends of Recovery NY](#))




19

System Alignment Opportunities

State Coordination and Alignment Recommendations Cont.

- Identify and Address Regulatory Barriers (WI [decriminalizes fentanyl test strips](#))
- Cultivate Cross-Agency Partnerships
- Create or Enhance Workforce Career Pathways for People with Lived Expertise (GA's DBH Certified Addiction Recovery Empowerment Specialist [Academy](#))




20

Local Coordination and Alignment

Federal + State agency alignment = greater alignment opportunities locally. Local partnerships should prioritize:



- Robust MOU/ Strategic Partnership Agreement
- Partnership planning that uses the Heart Equity Action Lab (HEAL) Racial Equity and Social Justice Tool
- Hiring and staffing processes that lead to representation at all levels of administration and service delivery
- Housing choice and the availability of low-barrier and recovery housing units
- Culturally responsive programming across combined interventions




21

Local Coordination and Alignment Cont.

- Rapid responses protocols to drug overdoses to reduce mortality; optimize engagement into on-demand treatment and recovery support services; and support the needs of property owners.
- Recognition of the benefits of MAT/MAR and promotion of this EBP.
- Capacity for recovery support services to be available to all those touched by system.
- Availability of harm reduction practitioners.
- Motivational interviewing as a practice to support people in identifying what recovery looks like and supporting the steps to achieve it.






22

22

Local Coordination and Alignment Cont.

- Promotion of overdose prevention and response plans and Advance Care Planning
- Increased access to harm reduction resources and supplies (e.g., safe injection sites, fentanyl test strips, safe smoking kits).
- Employment of certified peer specialists who offer shared understanding, respect, and empowerment in service navigation and model what long-term recovery can look like.
- Partnerships with SUD treatment providers to offer on-demand withdrawal treatment, inpatient and outpatient treatment, MAT, and contingency management.
- Qualitative and quantitative analysis of outcomes and continuous quality improvement.

23

23

New System Alignment Resource

The Technical Assistance Collaborative, Inc. (TAC) is excited to announce its launch of the Systems Alignment Innovation Hub, a nationwide project funded by the Robert Wood Johnson Foundation to help medical, social service, and public health providers in low-income and BIPOC communities dismantle inequities and improve health and well-being for all. The Hub will provide:

- Technical assistance and consultation to organizations with innovative systems alignment ideas
- A peer learning network to assist practice-based organizations in refining their ideas
- Targeted research funding for selected organizations
- Tools, guides and resources for dissemination to support these efforts

For more information, you can email rpost@tacinc.org





24

24



25



Poll Question

What additional resources does your community need to be able to combine interventions in support of a best practice SUD and Housing System of Care? (check all that apply):

- TA/Training on how to **employ racial equity and social justice systems change**
- TA and investments that **build cross-system alignment** of these combined practices
- TA/Training to assist practitioners in the **adoption and integration of best practices**
- Training on **monitoring** the use of best practices across the system of care
- Other _____

SAMHSA
Substance Abuse and Mental Health Services Administration

26



Resources

- [TAC's Comprehensive & Culturally Responsive SUD System of Care for those Experiencing Homelessness](#)
- [Heart Equity Action Lab Racial Equity and Social Justice Toolkit](#)
- [White House National Drug Control Strategy](#)
- Los Angeles County [Recent Trends in Mortality Rates and Causes of Death Among People Experiencing Homelessness](#)
- [HHRG: Guide to Methamphetamine Use, Treatment, and Housing Considerations for People Experiencing Homelessness](#)
- US Department of Health & Human Services [Overdose Prevention Strategy](#)
- SAMHSA [Peer Recovery Center of Excellence](#)
- HHS National Standards for [Culturally and Linguistically Appropriate Services](#) in Health and Health Care
- HHRG: [Whole Person Care For People Experiencing Homelessness and Opioid Use Disorder Toolkit](#)

SAMHSA
Substance Abuse and Mental Health Services Administration

27



Evaluation and Certificate of Participation

<https://lanitek.com/P?s=946561>

HHRC HOMELESS & HOUSING RESOURCE CENTER

SAMHSA Substance Abuse and Mental Health Services Administration

28



Thank You!

SAMHSA's Homeless and Housing Resource Center provides high-quality, no-cost training for health and housing professionals in evidence-based practices that contributes to housing stability, recovery, and an end to homelessness.

Contact Us:

<http://hhrctraining.org/> | info@hhrctraining.org | 518-439-7415x4

HOMELESS & HOUSING RESOURCE CENTER

PRI POLICY RESEARCH, INC.

SAMHSA Substance Abuse and Mental Health Services Administration

29
