

**HOMELESS & HOUSING RESOURCE CENTER**

## Trauma Informed Outreach and Engagement Learning Community

Session #1  
Trauma-Informed Care: Responding to the Trauma of Homelessness

**SAMHSA**  
Substance Abuse and Mental Health Services Administration

June 7, 2022

1

---

---

---

---

---



---

---

---

## Disclaimer

The Homeless and Housing Resource Center is a program operated by Policy Research, Inc. and developed under grant 1H79SM083003-01 from the Substance Abuse and Mental Health Services Administration (SAMHSA), U.S. Department of Health and Human Services (HHS). Interviews, policies, and opinions expressed are those of the authors and do not necessarily reflect those of SAMHSA or HHS.

2

---

---

---

---


---


---

---

---

## ASL Interpretation and Transcription

- We have arranged for ASL interpretation services during this meeting. The ASL interpreters are:
  - Justin Anderson
  - Meagan Thorp
- Live transcription is available
  - Click Live Transcript  and then select Show Subtitle
  - Subtitles can be moved within the window and re-sized
- If you are experiencing technical difficulties, please contact [info@hrctraining.org](mailto:info@hrctraining.org)



3

3

---

---

---

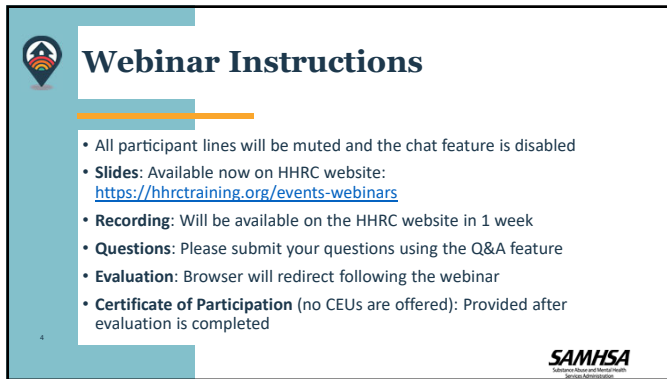
---

---

---

---

---



## Webinar Instructions

- All participant lines will be muted and the chat feature is disabled
- **Slides:** Available now on HHRC website: <https://hhrctraining.org/events-webinars>
- **Recording:** Will be available on the HHRC website in 1 week
- **Questions:** Please submit your questions using the Q&A feature
- **Evaluation:** Browser will redirect following the webinar
- **Certificate of Participation** (no CEUs are offered): Provided after evaluation is completed

4

**SAMHSA**  
Substance Abuse and Mental Health Services Administration

4

---

---

---

---

---

---

---

---



## Introduction to the Learning Community

- This learning community will focus on trauma-informed outreach and engagement practices to serve individuals with serious mental illness, serious emotional disturbances, substance use disorders, or co-occurring disorders.
- In this four-part series, you will learn best practices in trauma-informed care and person-centered outreach, how to connect people with services and housing, and how to provide behavioral health care assessments in unsheltered environments.

5

**HHRC**  
Homeless and Housing Resource Center

**SAMHSA**  
Substance Abuse and Mental Health Services Administration

5

---

---

---

---

---

---

---

---



## Learning Community Series

- ★ **Session 1** Trauma-Informed Care: Responding to the Trauma of Homelessness
- Session 2** Best Practices for Person-Centered Outreach
- Session 3** Making the Connection to the Homeless Response System
- Session 4** Providing Behavioral Health Care in Unsheltered Environments

6

**SAMHSA**  
Substance Abuse and Mental Health Services Administration

6

---

---

---

---

---

---

---

---

## Today's Learning Objectives

- Build foundational knowledge of trauma and trauma-informed care
- Understand the relationship between trauma and the experience of homelessness
- Explore best practices in trauma-informed care
- Highlight examples of incorporating trauma-informed care into work with people experiencing homelessness in different settings



7

---

---

---

---

---

---

---

---

## Today's Presenters



Gillian Morshedi  
Homebase



Tiffany Juarez, LCSW  
Battling Minds, LLC



Alicia Lehmer  
Homebase



8

---

---

---

---

---

---

---

---

## Poll #1: Tell Us About Yourself!

- Which would best describe the focus of your work?
  - Behavioral health care
  - Physical health care
  - Homeless services
  - Housing
  - Social services
  - Outreach
  - Other (please share in the chat)



9

9

---

---

---

---

---

---

---

---

**Poll #2:  
Working with  
People Experiencing  
Homeless**



How much of your work is with people experiencing homelessness?

- **100%** dedicated to serving people experiencing homelessness
- **Most** of our clients are experiencing homelessness
- **Some** of our clients are experiencing homelessness
- **A few** of our clients are experiencing homelessness

**HHRC**  
Homeless Housing Resource Center

**SAMHSA**  
Substance Abuse and Mental Health Services Administration

10

---

---

---


---

---

---

---

---



**Introduction to Trauma and Homelessness**

**HHRC**  
Homeless Housing Resource Center

**SAMHSA**  
Substance Abuse and Mental Health Services Administration

11

---

---

---

---

---

---


---

---

**What is Trauma?**

Trauma results from exposure to an incident or series of events that are threatening to a person's physical, mental or emotional well-being.

These incidents or series of events have lasting adverse effects on the individual's functioning and well-being. Trauma can be overwhelming, result in intense feelings of fear and lack of control, and leave people feeling helpless.



**SAMHSA**  
Substance Abuse and Mental Health Services Administration

12

---

---

---

---


---

---


---

---


## The Three “E”s of Trauma



EVENT



EXPERIENCE



EFFECT

**SAMHSA**  
Substance Abuse and Mental Health Services Administration

13

13

---

---

---

---

---

---

---

---

## Effects of Trauma

*May include:*

- Increased physical and mental stress
- Impacts on cognitive processes (memory, attention, thinking)
- Inability to cope with the stresses and strains of daily living
- Difficulty trusting others and forming close relationships (personal, professional, with service providers)
- Fear or concern about safety
- Difficulty regulating behavior and expressing emotions
- Lack of belief in self-worth and capabilities

**SAMHSA**  
Substance Abuse and Mental Health Services Administration

14

14

---

---

---

---

---

---

---

---

## Trauma and Behavioral Health

### Substance Use

- Many people who have substance use disorders have experienced trauma as children or adults
- People who abuse substances and have experienced trauma have worse treatment outcomes than those without histories of trauma

### Mental Health

- People who are receiving treatment for severe mental disorders are more likely to have histories of trauma
- Traumatic stress increases the risk for mental illness, and findings suggest that traumatic stress increases the symptom severity of mental illness

**HHRC**  
Homeless and Housing Resource Center

**SAMHSA**  
Substance Abuse and Mental Health Services Administration

15

15

---

---

---

---

---

---

---

---

## The Trauma of Homelessness

*The experience of homelessness itself is traumatic*

Lack of safety and control	Dangers, indignities, threats, and stigma	Circumstances that can exacerbate and compound symptoms of mental health and substance use disorders
Disconnect from social supports and community at large	Fragmented, unresponsive systems	Re-traumatization

**SAMHSA**  
Substance Abuse and Mental Health Services Administration

16

16

---

---

---

---

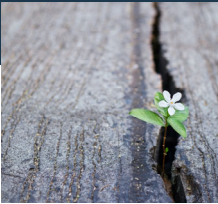
---

---

---

---

## Survival Strategies



Trauma survivors often develop a set of survival skills that help them to manage past trauma, such as substance use, withdrawal, and aggression.

**HHRC**  
HOMELESS AND HOUSING RESOURCE CENTER

**SAMHSA**  
Substance Abuse and Mental Health Services Administration

17

17

---

---

---

---

---

---

---

---

## Community Presentation and Conversation: Trauma of Homelessness



Tiffany Juarez, LCSW  
Battling Minds, LLC

**HHRC**  
HOMELESS AND HOUSING RESOURCE CENTER

**SAMHSA**  
Substance Abuse and Mental Health Services Administration

18

18

---

---

---

---

---

---

---

---



19

---

---

---

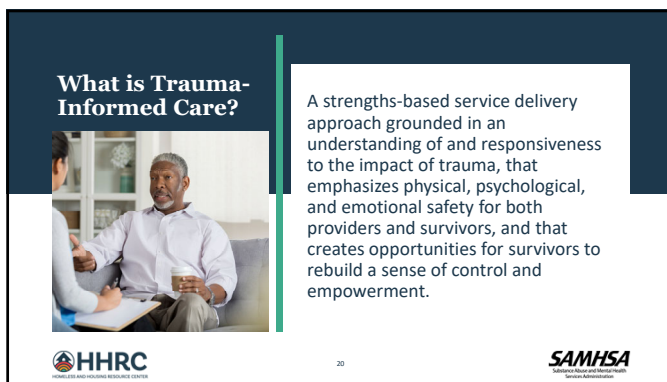
---

---

---

---

---



20

---

---

---

---

---

---

---

---



21

---

---

---

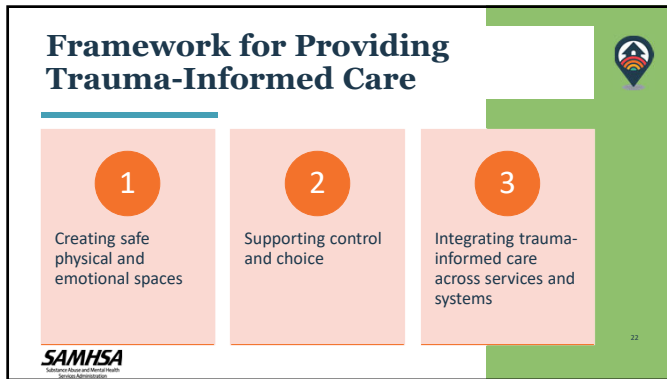
---

---

---

---

---



22

---

---

---

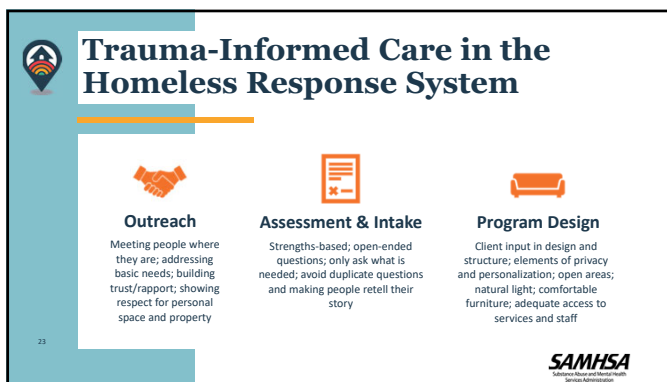
---

---

---

---

---



23

---

---

---

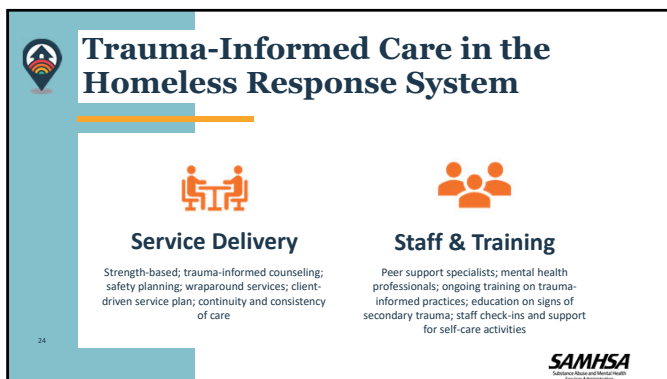
---

---

---

---

---



24

---

---

---

---

---

---

---

---



## Trauma-Informed Care & Harm Reduction

- Harm reduction focuses on meeting people where they are to help them minimize the risks associated with behaviors that can cause harm, such as substance use.
- Success is measured by positive behavior change, no matter how big or small.
- Harm reduction honors a person's autonomy (control and choice) in defining their path and timeline while still promoting greater health and safety.

**SAMHSA**  
Substance Abuse and Mental Health  
Services Administration

25

25

---

---

---

---

---

---

---

---

## Trauma-Informed Care & Peer Supports

- **Peers** refer to individuals with shared lived experiences, which may include trauma, homelessness, mental health or substance use disorders, and other shared identities or experiences.
- **Peer support workers or specialists** are trained to use their lived experiences skillfully in supporting others on their journeys.
- Peer support is key for establishing safety and hope, building trust, enhancing collaboration, and exploring options and problem-solving challenges.

**SAMHSA**  
Substance Abuse and Mental Health  
Services Administration

26

26

---

---

---

---

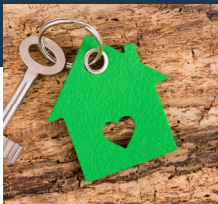
---

---

---

---

## Trauma-Informed Care & Housing First



- Housing First prioritizes providing permanent housing to people experiencing homelessness, thus ending their homelessness and serving as a platform from which they can pursue personal goals and improve their quality of life.
- For people with histories of trauma, ending homelessness is crucial for healing trauma and building resilience.
- Housing First prioritizes strengths, respect, choice, and safety for persons experiencing homelessness.

**HHRC**  
HOMELESS AND HOUSING RESOURCE CENTER

27

**SAMHSA**  
Substance Abuse and Mental Health  
Services Administration

27

---

---

---


---

---

---

---

---





### Community Presentation and Conversation:

#### Trauma-Informed Care in Practice



Tiffany Juarez, LCSW  
Battling Minds, LLC

28

---

---

---

---

---

---

---

---



## Question?





29

---

---

---


---

---

---



---

---



## Closing Poll

What is one thing you will take into your work based on what was shared today?

30

---

---

---

---

---

---

---

---



## Series Overview & Future Sessions

- ☒ **Session 1** Trauma-Informed Care: Responding to the Trauma of Homelessness
- Session 2** Best Practices for Person-Centered Outreach
- Session 3** Making the Connection to the Homeless Response System
- Session 4** Providing Behavioral Health Care in Unsheltered Environments

31



31

---

---

---

---

---

---

---

---

## Next Session





**Best Practices for Person-Centered Outreach**

Jun 21, 2022  
2:30 - 4pm (EST)

HHRC

32



32

---

---

---

---

---

---

---

---

## Thank You!

SAMHSA's Homeless and Housing Resource Center provides high-quality, no-cost training for health and housing professionals in evidence-based practices that contributes to housing stability, recovery, and an end to homelessness.

**Contact Us:**

<http://hhrctraining.org/> | [info@hhrctraining.org](mailto:info@hhrctraining.org) | 518-439-7415x4





33

---

---

---

---

---

---

---

---